

City of Ashland Transportation System Plan Update Meeting #1

August 24, 2010



KITTELSON & ASSOCIATES, INC.
TRANSPORTATION ENGINEERING/PLANNING



**CITY OF
ASHLAND**

Joint PC/TC Meeting Agenda

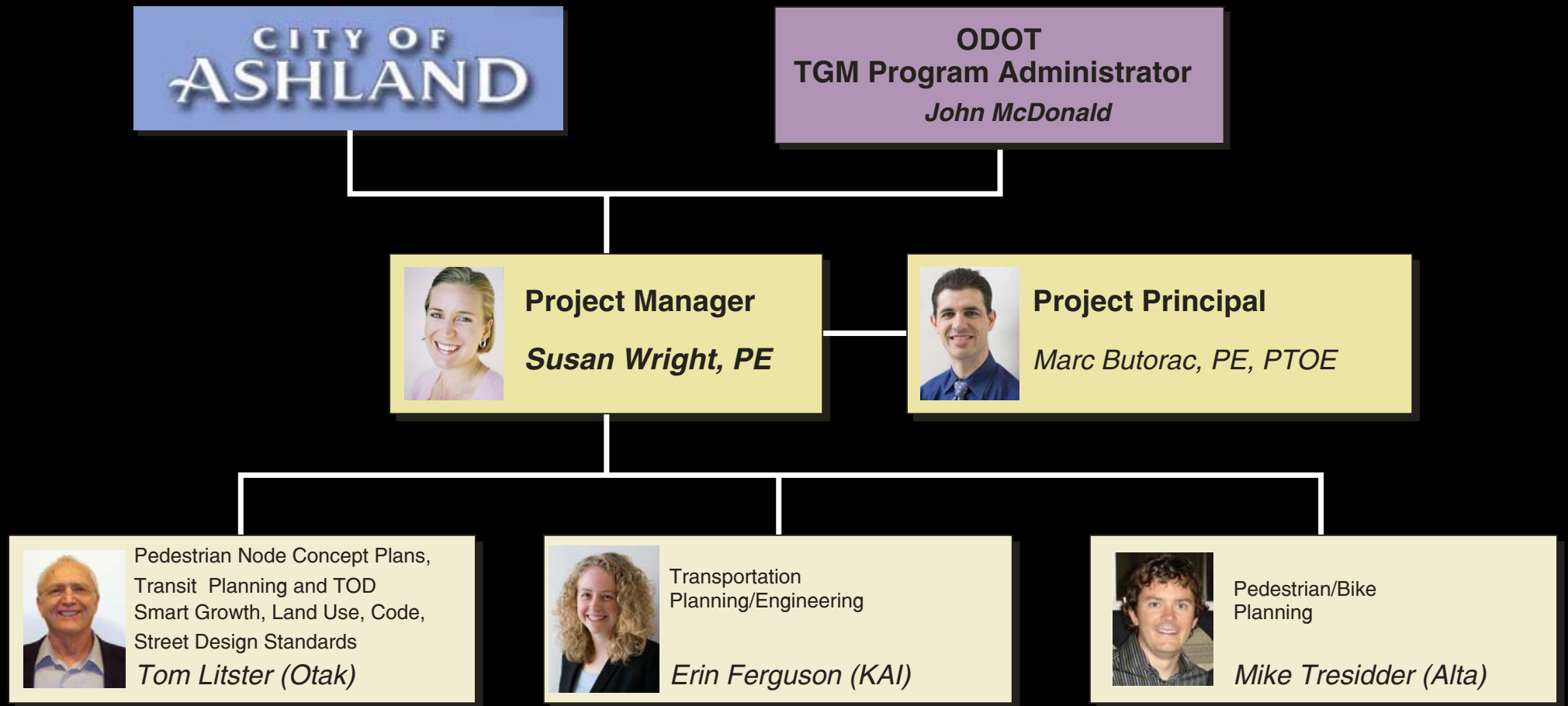
7:00 p.m. – 9:00 p.m.

- › Introductions (Consultant Team and Committees/Commissions)
- › Project Overview
 - *Project Background and Scope*
 - *Public Process Desires*
 - *Draft Project Schedule*
 - *Review of Project Website*
 - *Roles and Expectations*
 - *Commissioner Comments*
- › Discuss Draft Technical Memorandums #1 and #2
 - *Commissioner Comments*
- › Public Comments



Introductions

› Team Organization Chart



Introductions

- › PC and TC Commissioners
 - *Interest in and/or hopes for the project*

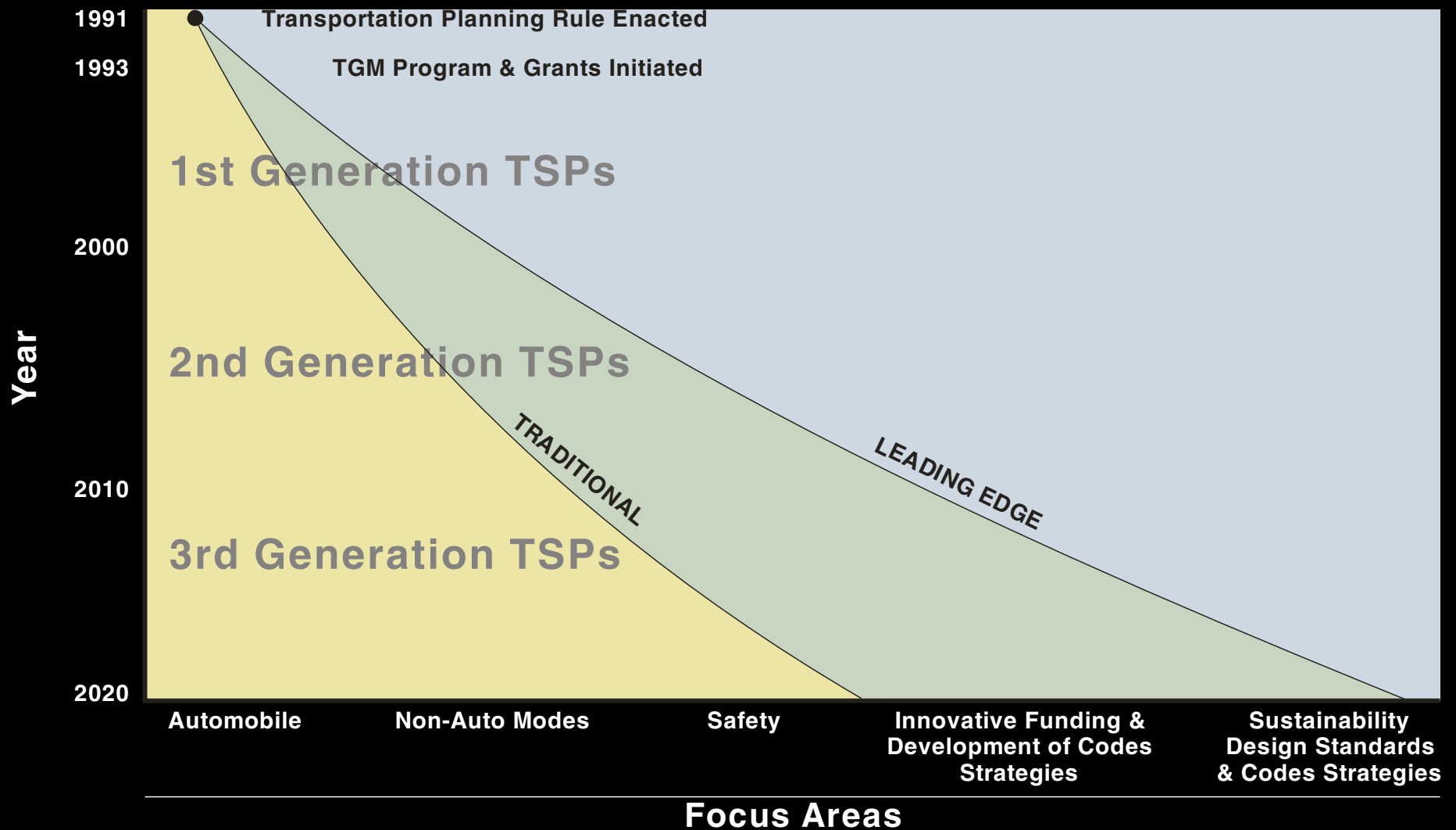


Project Background and Scope

- › Previous Transportation System Plans for City of Ashland
 - *Transportation Element of the Comprehensive Plan updated in 1997*
 - *Last full updated and adopted TSP completed in 1998*
 - *Partial update to TSP completed in 2007 (not adopted)*



Oregon TSP History Perspective



Backcasting and Benchmarking Framework



Project Background and Scope

› Purpose of Current Update

- *Develop an updated TSP for the City of Ashland that implements the goals of the Transportation Element of the Comprehensive Plan*
 - Helps the City of Ashland move towards being a less auto-dependent community
 - Integrates future land use and multimodal transportation system elements
 - Enhances livability, small-town character and the natural environment
- *Produce a TSP that will assist the community in providing transportation facilities to residents and guests of Ashland in a sustainable way*



Project Background and Scope

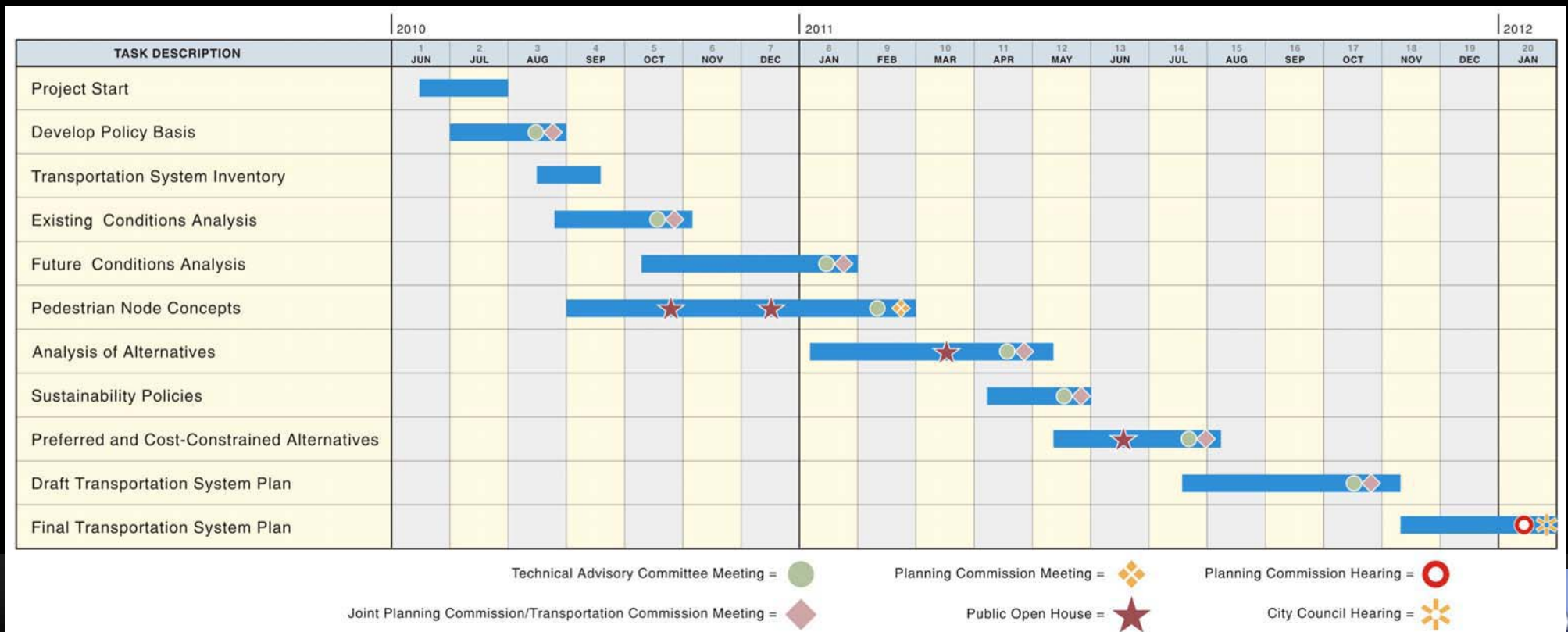
› Scope

- *Task 1 – Establish Committees and Start Project*
- *Task 2 – Develop Policy Basis*
 - We are currently in the midst of Task 2 work efforts.
- *Task 3 – Update the Transportation System Inventory*
- *Task 4 – Existing Conditions Analysis*
- *Task 5 – Future Conditions Analysis*
- *Task 6 – Pedestrian Node Concept Plans*
 - N. Mountain Ave./E. Main St.
 - Walker St./Ashland St.
 - Tolman Creek Rd./Ashland St.
- *Task 7 – Development and Analysis of Transportation Alternatives*
- *Task 8 – Develop Sustainability Policies*
- *Task 9 – Identification of Preferred and Cost-Constrained Alternatives*
- *Task 10 – Draft TSP, Implementing Ordinances and Findings*
- *Task 11 – Final TSP, Implementing Ordinances and Findings*



Draft Project Schedule

- › 18 months to Draft TSP
 - *18 months is a critical timeframe for project momentum and keeping public engaged in process*
 - 8 TAC and PC/TC Meetings
 - 4 Public Open Houses
- › Additional Public Process at adoption hearings in January 2012



Draft Open House Schedule/Agendas

- › Open House #1 (October 2010)
 - *Interactive workshop to gather input for development of Pedestrian Node Concept Plans*
 - *Provide information on TSP Existing Conditions and promote on-line travel survey*
- › Open House #2 (December 2010)
 - *Workshop to review Draft Pedestrian Node Concept Plans*
 - *Provide information on TSP Future No-Build Conditions*
- › Open House #3 (March 2011)
 - *Interactive TSP workshop on development of transportation alternatives*
- › Open House #4 (June 2011)
 - *Presentation of alternatives analysis findings and interactive workshop on draft preferred plan and sustainability policies*



Public Process Desires

› Desires for public process

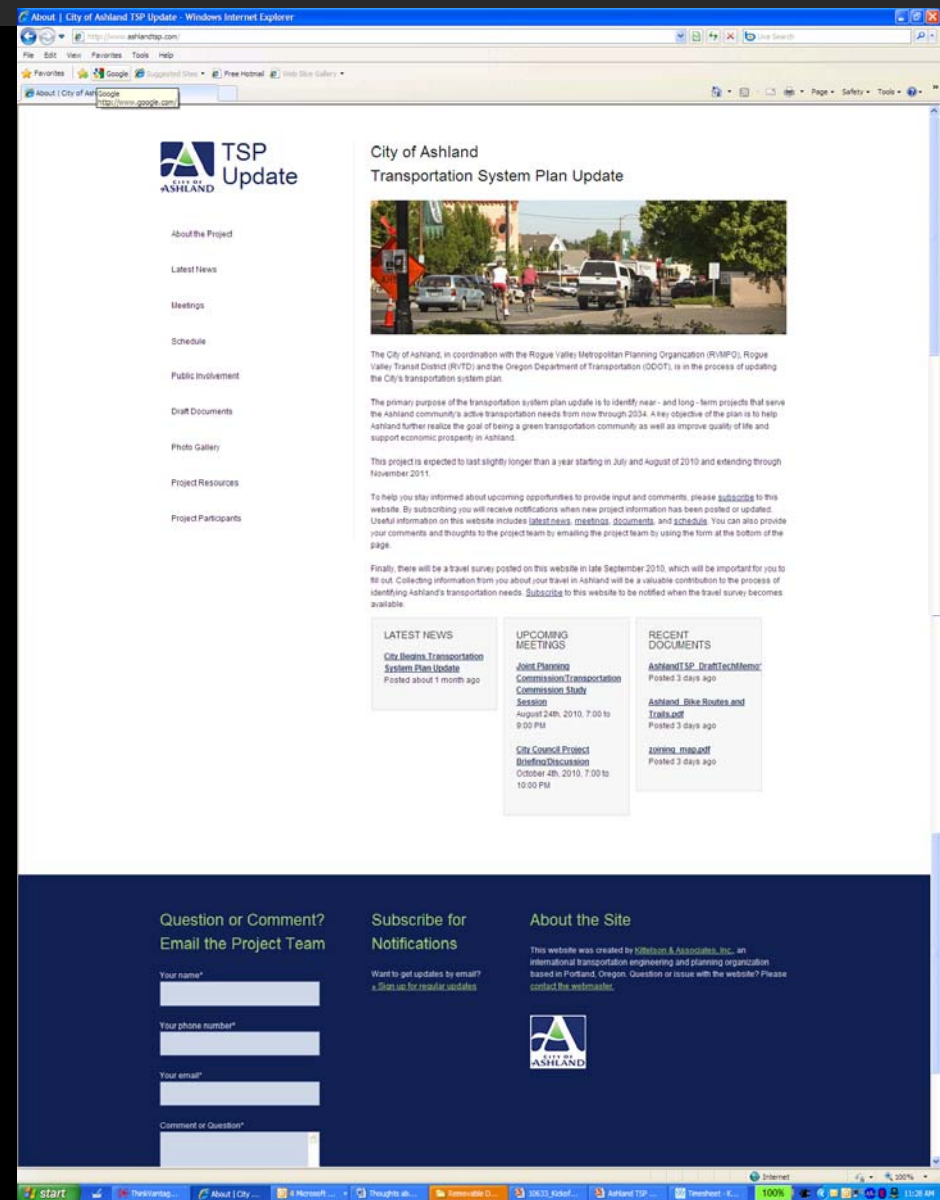
- *To be led by Planning Commission and/or Transportation Commission*
 - PC and/or TC to invite the public to attend
 - PC and/or TC Chairs to open meetings
 - PC and/or TC members to sit down with groups and facilitate table discussions
 - PC and/or TC to validate meeting summaries
- *Announcements in newspaper and City Source well in advance*
- *Opportunities to discuss how examples apply to Ashland*
- *Opportunities for people to be creative*



Public Website – ashlandtsp.com

► Features


- *Project overview*
- *Latest news*
- *General Schedule*
- *Meeting schedule*
- *Draft/Final documents*
- *Information on public involvement*
- *Project Resources*
- *Photo gallery*
- *Project Participants*
- *Opportunity to provide input/comments via a link on the website*
- *Registration for website updates*



Public Website – ashlandtsp.com

- › Features
 - *Project overview*

City of Ashland
Transportation System Plan Update



The City of Ashland, in coordination with the Rogue Valley Metropolitan Planning Organization (RVMPO), Rogue Valley Transit District (RVTD) and the Oregon Department of Transportation (ODOT), is in the process of updating the City's transportation system plan.

The primary purpose of the transportation system plan update is to identify near - and long - term projects that serve the Ashland community's active transportation needs from now through 2034. A key objective of the plan is to help Ashland further realize the goal of being a green transportation community as well as improve quality of life and support economic prosperity in Ashland.

This project is expected to last slightly longer than a year starting in July and August of 2010 and extending through November 2011.

To help you stay informed about upcoming opportunities to provide input and comments, please [subscribe](#) to this website. By subscribing you will receive notifications when new project information has been posted or updated. Useful information on this website includes [latest news](#), [meetings](#), [documents](#), and [schedule](#). You can also provide your comments and thoughts to the project team by emailing the project team by using the form at the bottom of the page.

Finally, there will be a travel survey posted on this website in late September 2010, which will be important for you to fill out. Collecting information from you about your travel in Ashland will be a valuable contribution to the process of identifying Ashland's transportation needs. [Subscribe](#) to this website to be notified when the travel survey becomes available.

LATEST NEWS
[City Begins Transportation](#)

UPCOMING MEETINGS

RECENT DOCUMENTS

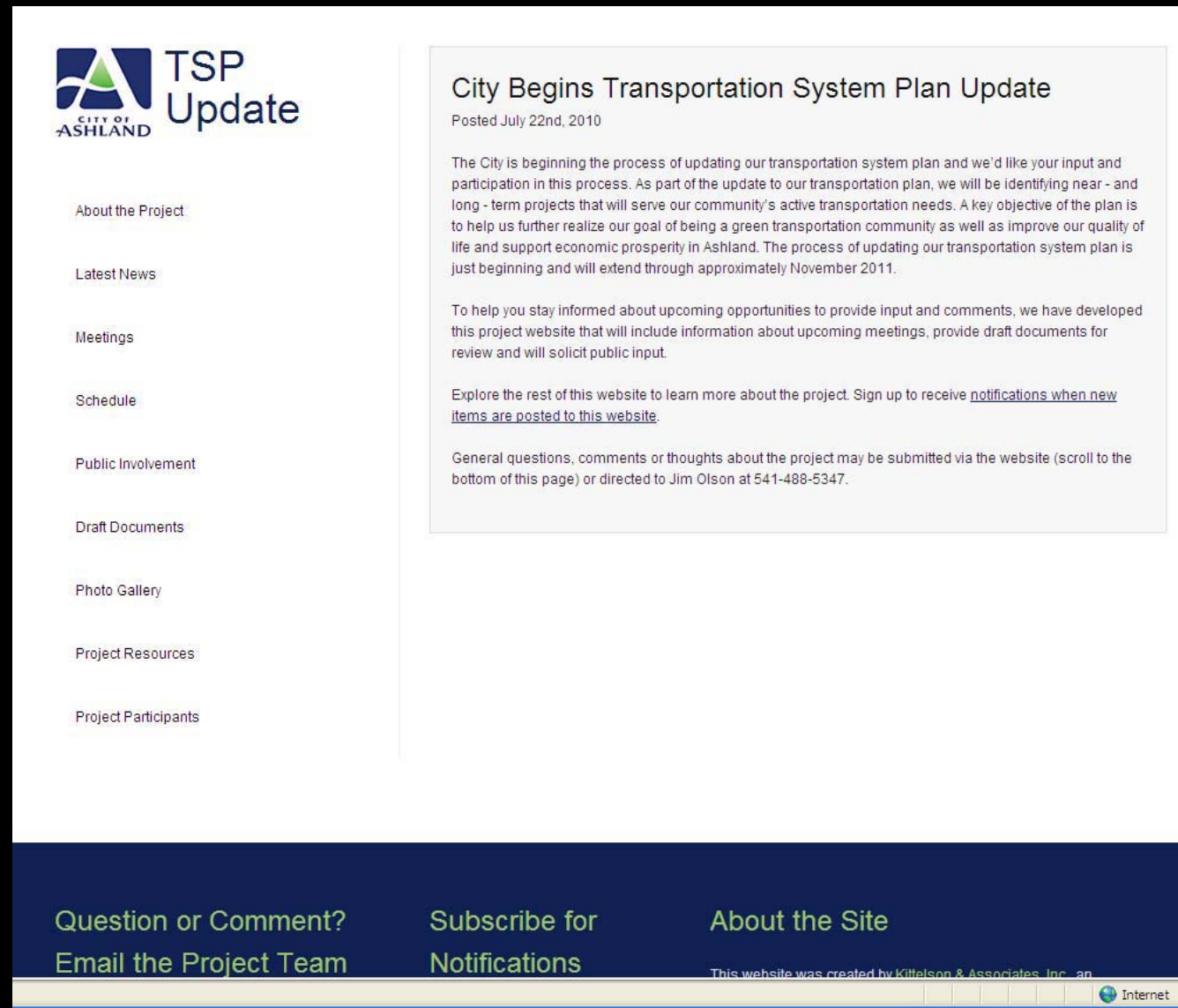
Internet



Public Website – ashlandtsp.com

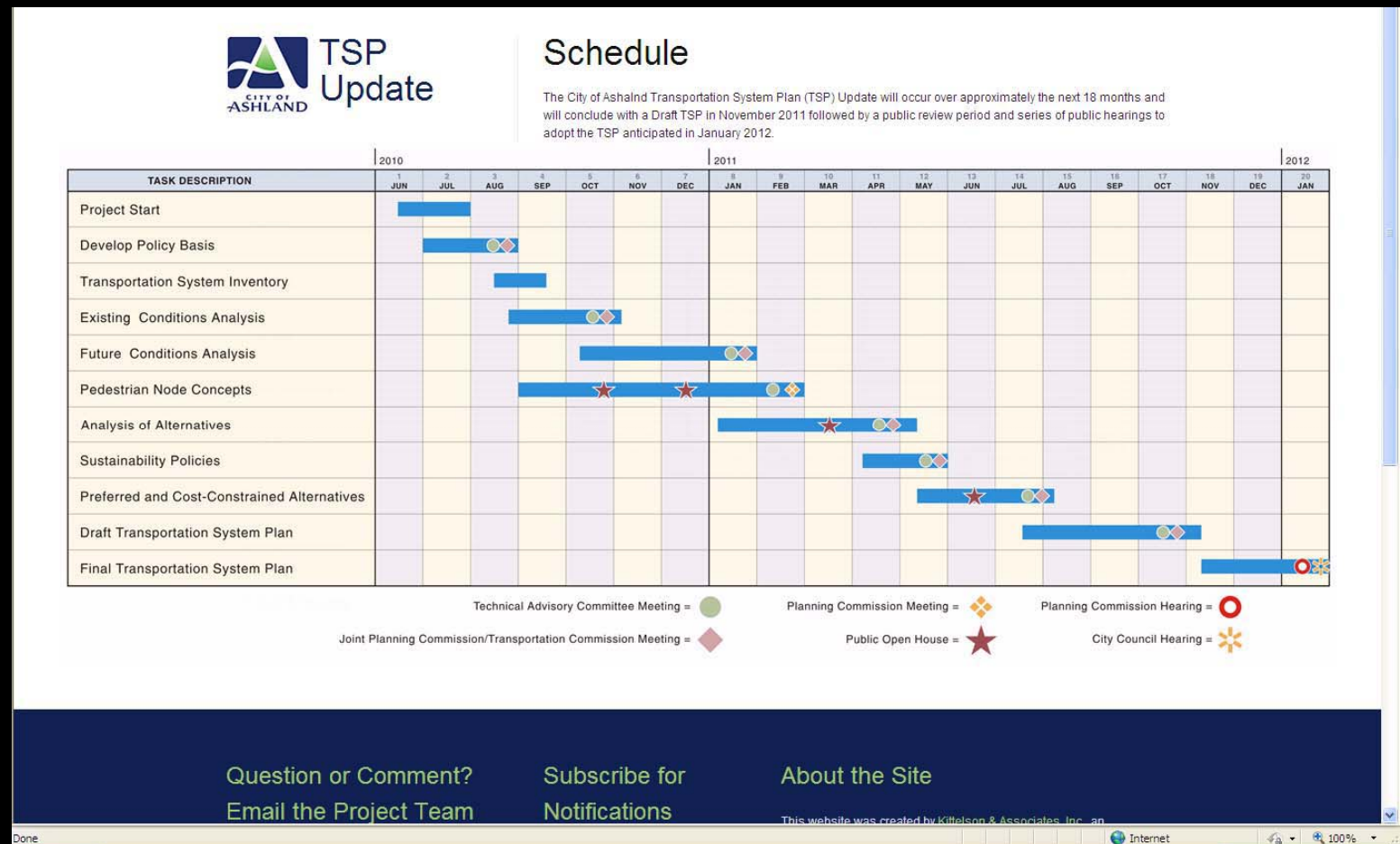
► Features

- *Latest news*



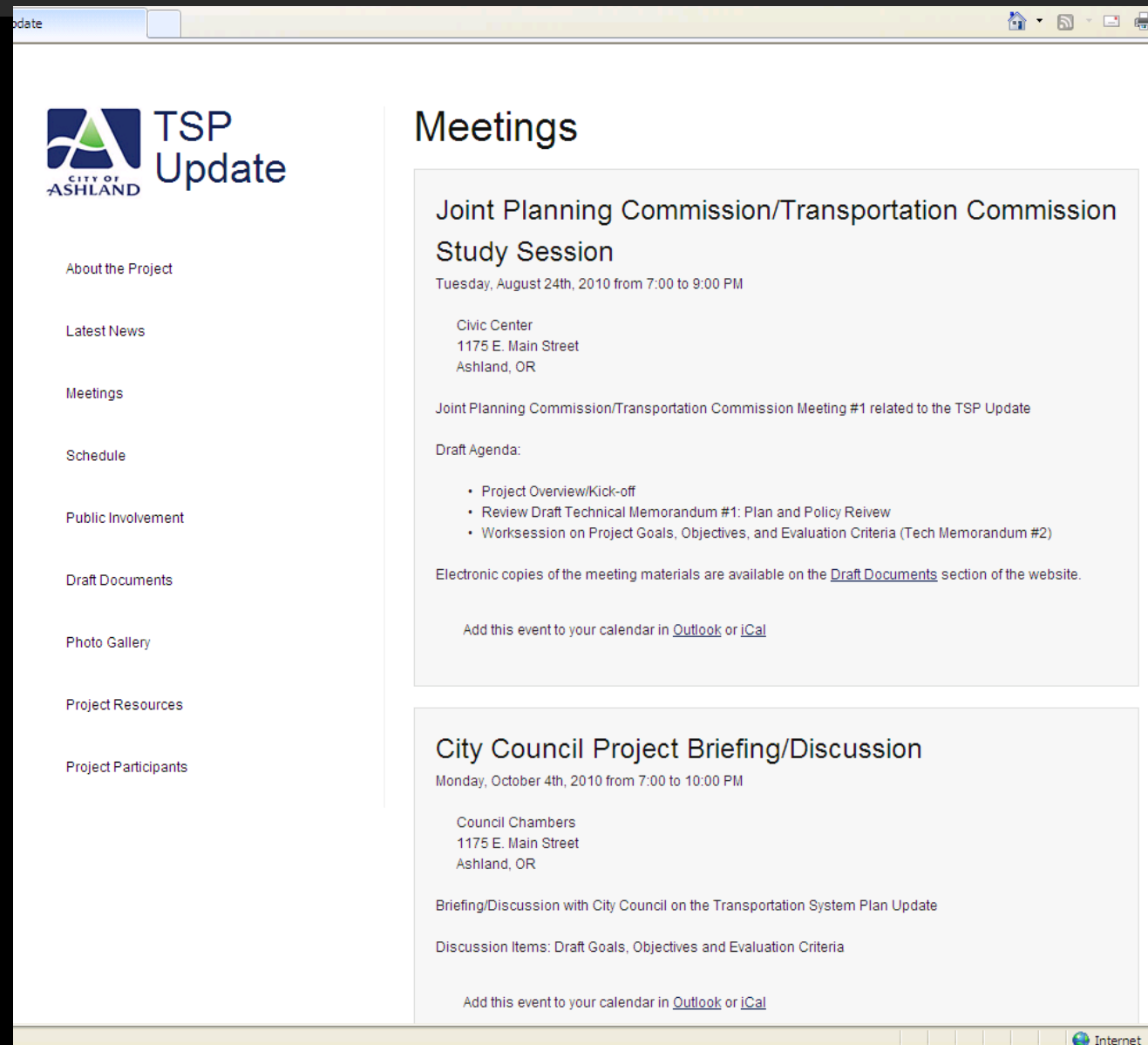
Public Website – ashlandtsp.com

- › Features
 - *General Schedule*



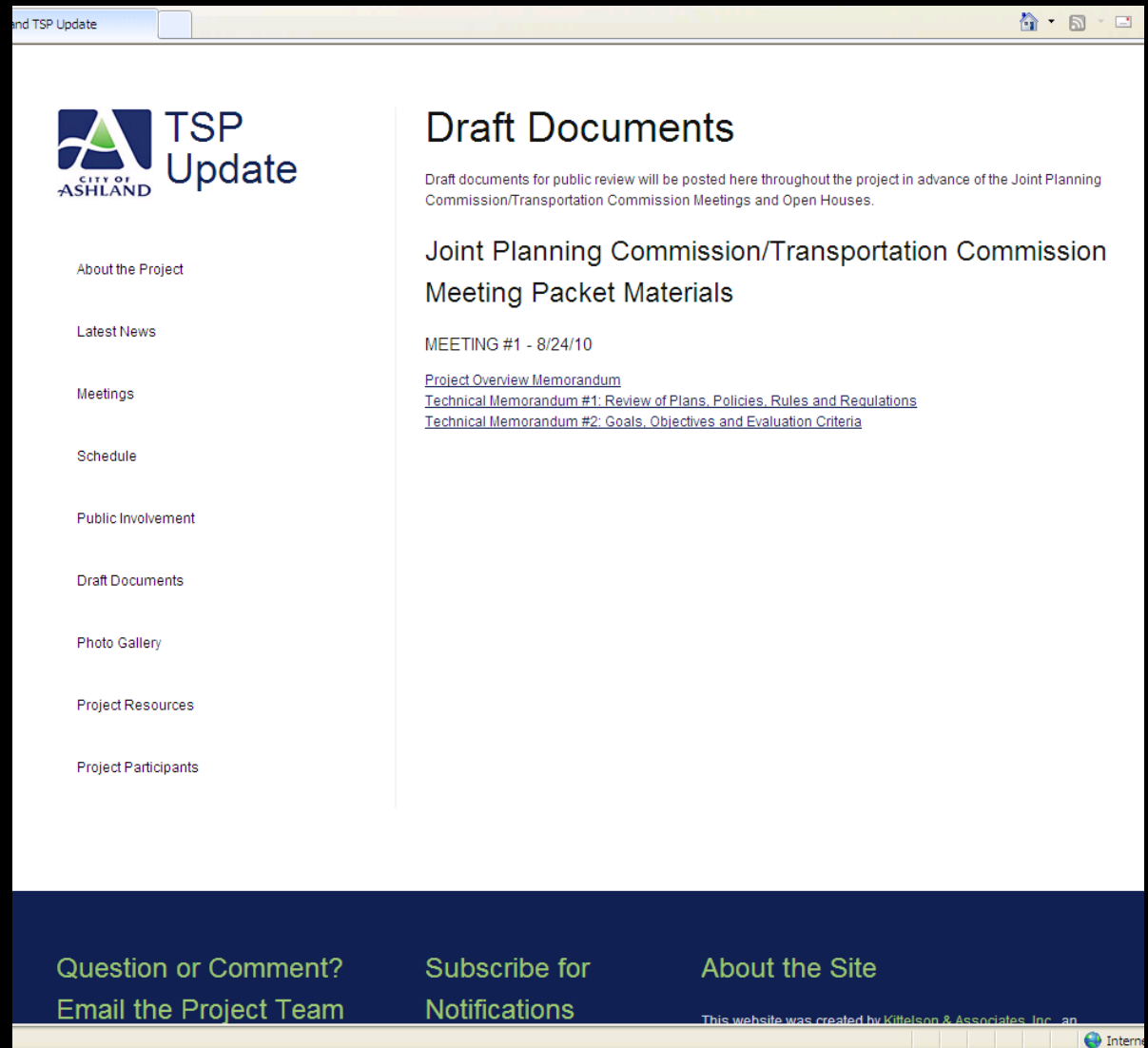
Public Website – ashlandtsp.com

- › Features
 - *Meeting Schedule*



Public Website – ashlandtsp.com

- › Features
 - *Draft Documents*

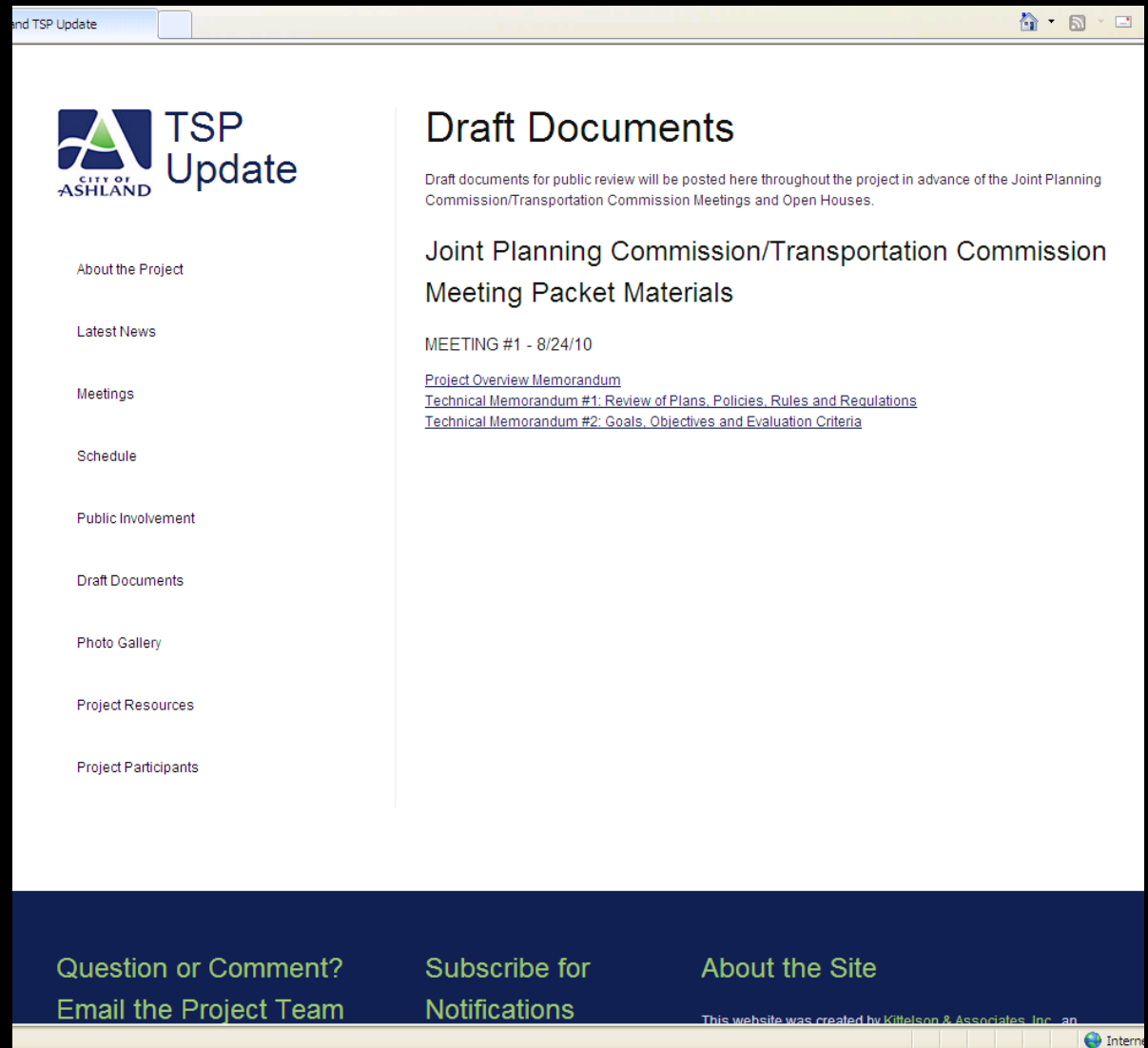


KITTELSON & ASSOCIATES, INC.
TRANSPORTATION ENGINEERING/PLANNING

CITY OF
ASHLAND

Public Website – ashlandtsp.com

- Features
 - *Draft Documents*



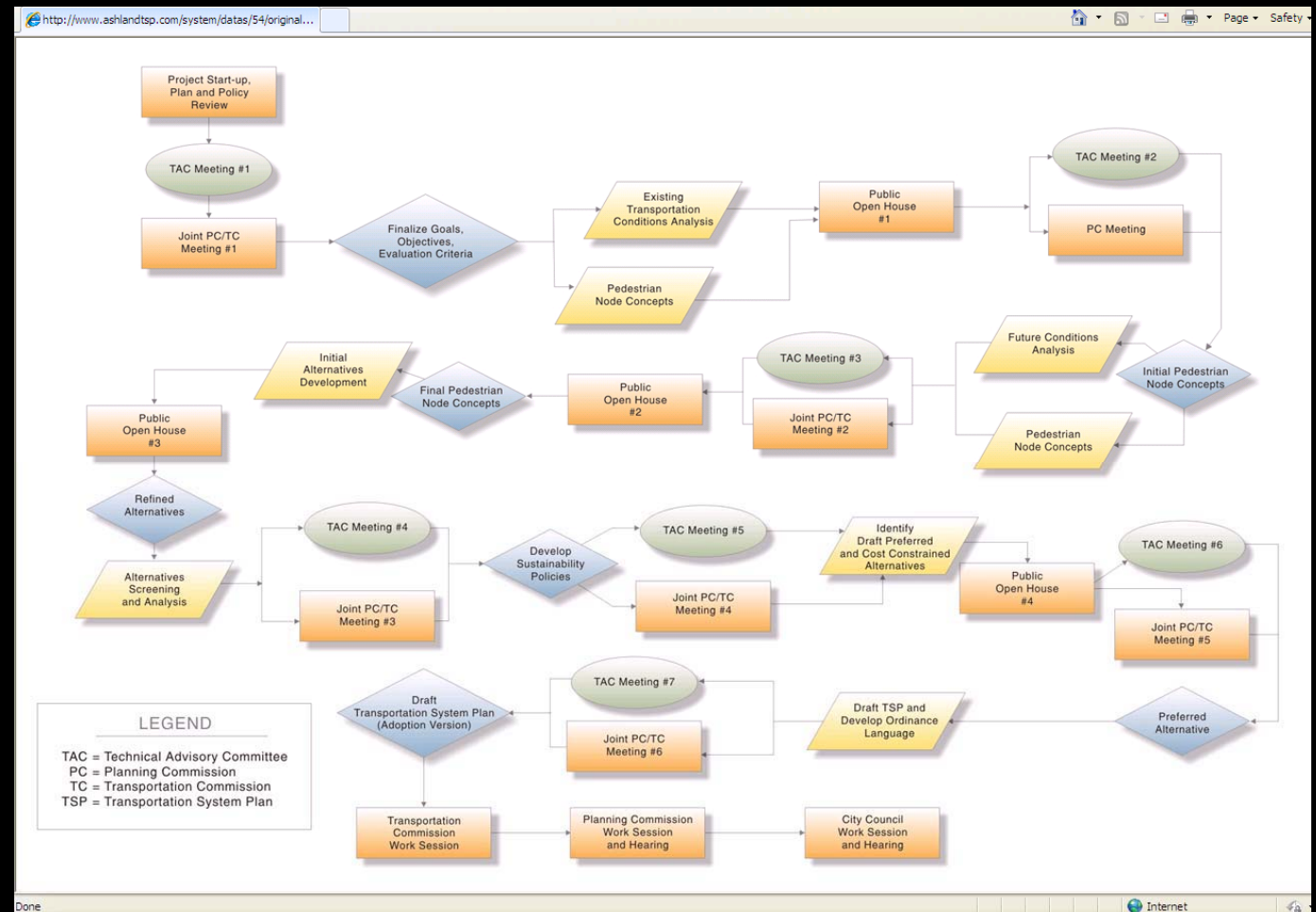
KITTELSON & ASSOCIATES, INC.
TRANSPORTATION ENGINEERING/PLANNING

CITY OF
ASHLAND

Public Website – ashlandtsp.com

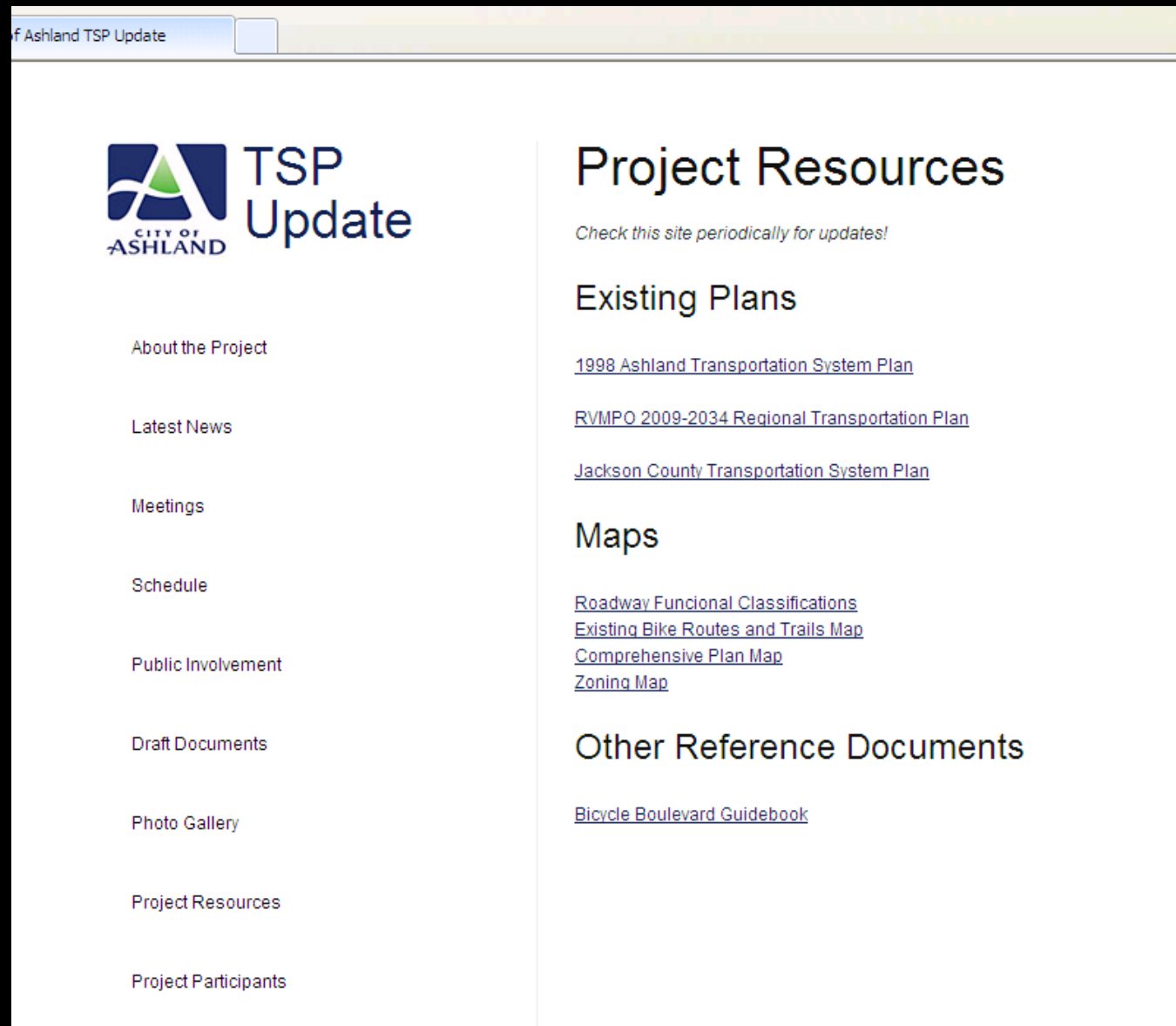
› Features

– *Public Involvement Overview*



Public Website – ashlandtsp.com

- › Features
 - *Project Resources*



Public Website – ashlandtsp.com

› Features

– *Photo Gallery*



KITTELSON & ASSOCIATES, INC.
TRANSPORTATION ENGINEERING/PLANNING

CITY OF
ASHLAND

Public Website – ashlandtsp.com

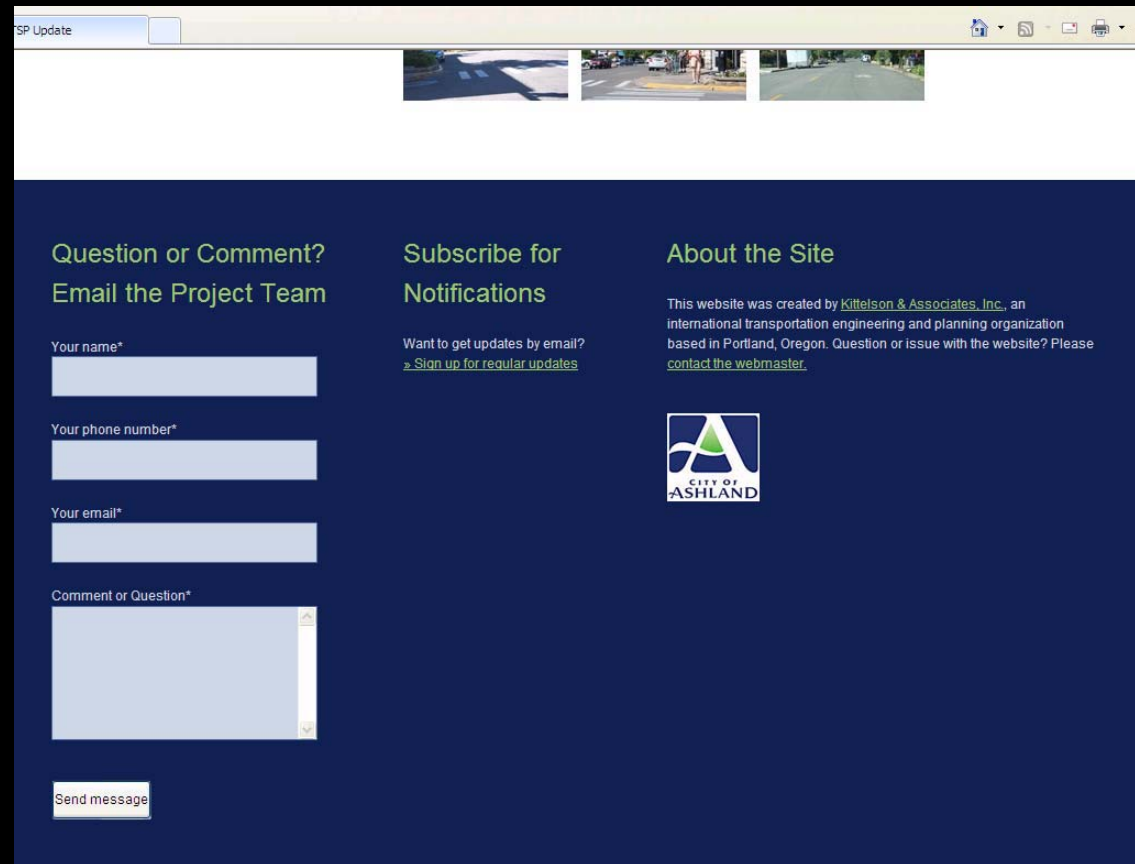
- › Features
 - *Project Participants*



Public Website – ashlandtsp.com

› Features

- *Opportunity to submit comments*
- *Register for Notifications*



The screenshot shows a web browser window with the title "TSP Update". The browser's address bar and navigation buttons are visible at the top. Below the browser window, the website content is displayed on a dark blue background. It features three main sections: "Question or Comment? Email the Project Team" with input fields for name, phone number, email, and a comment, followed by a "Send message" button; "Subscribe for Notifications" with a link to sign up for updates; and "About the Site" with a paragraph about Kittelson & Associates, Inc. and the City of Ashland logo.

TSP Update

Question or Comment?
Email the Project Team

Your name*

Your phone number*

Your email*

Comment or Question*


Send message

Subscribe for
Notifications

Want to get updates by email?
[» Sign up for regular updates](#)

About the Site

This website was created by [Kittelson & Associates, Inc.](#), an international transportation engineering and planning organization based in Portland, Oregon. Question or issue with the website? Please [contact the webmaster](#).


CITY OF
ASHLAND



Roles and Expectations

- › Attend applicable commission meetings
 - *Meetings to be held during regularly scheduled Planning Commission meetings.*
 - Contingency meetings available for additional meetings during regularly scheduled Transportation Commission meetings.
- › Review draft materials provided in advance of the meetings.
 - *PC & TC Members – Provide comments to chairperson by Friday following meetings*
 - Pedestrian Node materials may have different review schedule to accommodate PC Subcommittee review timelines

Roles and Expectations

- › Attendance at Public Workshops
 - *Desirable for all PC/TC members*
 - PC and TC Chair attendance a necessity
 - Adequate representation of PC and TC a necessity
 - Participation numbers to be determined based on planned activities



Project Overview

» Discussion

- *Your initial thoughts, input, comments, questions regarding Project Overview*



KITTELSON & ASSOCIATES, INC.
TRANSPORTATION ENGINEERING/PLANNING



CITY OF
ASHLAND

Technical Memorandum #1: Review of Policies, Plans, Rules and Regulations



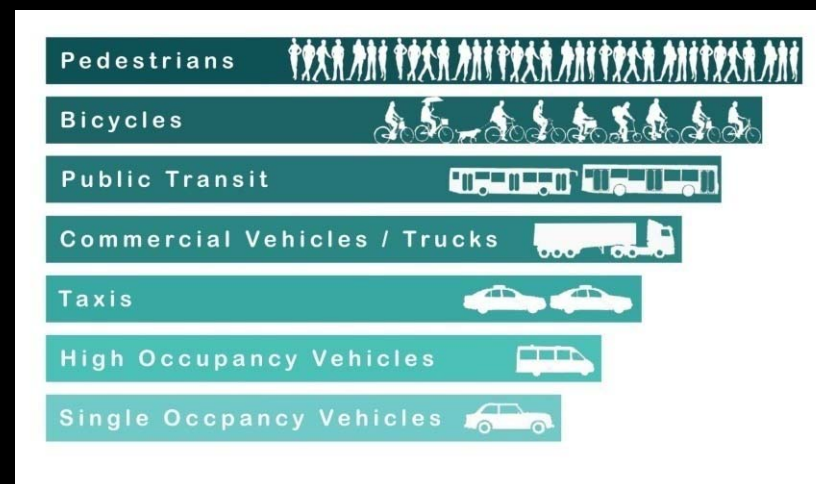
KITTELSON & ASSOCIATES, INC.
TRANSPORTATION ENGINEERING/PLANNING



CITY OF
ASHLAND

Technical Memorandum #1 – Review of Policies, Plans, Rules, and Regulations

"Develop an integrated land use and transportation plan to increase the viability of transit, bicycles, walking, and other alternative modes of transportation; reduce per capita automobile vehicle miles traveled; provide safe walking and bicycling routes to home, work, shopping, and schools; implement environmentally responsible design standards, and minimize new automobile-related infrastructure."



Source:
TGM Grant Application

Technical Memorandum #1 – Review of Policies, Plans, Rules, and Regulations

The intent of the review was to provide a baseline of applicable plans, policies and regulations for establishing goals, objectives and evaluation criteria for alternatives.



KITTELSON & ASSOCIATES, INC.
TRANSPORTATION ENGINEERING/PLANNING



CITY OF
ASHLAND

Technical Memorandum #1 – Review of Policies, Plans, Rules, and Regulations

What We Looked For

- › Transportation Elements – overarching goals and supporting policies, multimodal requirements, the linking the regional and the local objectives, coordination of project implementation and regulatory context for coordinating plans and projects across jurisdictions.
- › Land Use Elements – guidelines and estimations for future growth, support for mixed use and transit –oriented development, neighborhoods patterns and the expected role of transportation in community development.

Technical Memorandum #1 – Review of Policies, Plans, Rules, and Regulations

What We Looked For

- › Community Vision – Comprehensive Plans, citizen committees and their recommendations, community expectations for transportation enhancements and the importance of land use/transportation integration
- › Design Standards – street types and their standards, models for neighborhood connectivity and the role of streets as public spaces.



Technical Memorandum #1 – Review of Policies, Plans, Rules, and Regulations

City of Ashland	Transportation Elements	Land Use Elements	Community Vision	Design Standards
Comprehensive Plan	✓	✓	✓	✓
1998 Transportation System Plan (TSP)	✓			✓
Partial TSP Update	✓			✓
Land Use Code		✓		✓
Handbook for Planning and Designing Streets	✓			✓
Site Design and Use Standards		✓	✓	✓
Ashland in Action Report	✓		✓	
Buildable Lands Inventory		✓		
Croman Mill Site Redevelopment Plan	✓	✓	✓	✓
Ashland Downtown Plans	✓	✓	✓	
Economic Opportunities Analysis		✓		
Historic Preservation Plan		✓	✓	
Railroad Property Master Plan	✓	✓	✓	
Southern Oregon University Master Plan Update	✓	✓	✓	
Recommended Street Tree Guide	✓			✓
Solar Setback Guide		✓		✓
Transportation and Growth Management Outreach Workshop Final Report	✓	✓	✓	
2008 TGM Grant Application	✓	✓	✓	
Ashland Airport Master Plan		✓		



Technical Memorandum #1 – Review of Policies, Plans, Rules, and Regulations

County and Regional	Transportation Elements	Land Use Elements	Community Vision	Design Standards
Jackson County Comprehensive Plan	✓	✓	✓	
Jackson County TSP	✓	✓	✓	✓
RVMPO Regional Transportation Plan	✓	✓		
RVMPO Regional Transportation Improvement Plan	✓	✓		
RVMPO Freight Study	✓	✓		
RVMPO OR 99 North-South Travel Demand Study	✓	✓	✓	
Greater Bear Creek Valley Regional Plan	✓	✓	✓	
Bear Creek Greenway Management Plan	✓	✓	✓	
RVTD Ten Year Long Range Plan	✓	✓	✓	



Technical Memorandum #1 – Review of Policies, Plans, Rules, and Regulations

State	Transportation Elements	Land Use Elements	Community Vision	Design Standards
OAR Chapter 660 division 012	✓	✓		
OAR Chapter 734 division 051	✓			
Oregon Highway Plan	✓	✓		
Oregon Public Transportation Plan	✓	✓		✓
Oregon Rail Plan	✓			
Oregon Bicycle/Pedestrian Plan	✓	✓		✓
Statewide Planning Goals	✓	✓	✓	
Interchange Area Management Plan for Interchange 14	✓	✓		✓
Statewide Transportation Improvement Plan (2010-2013 Draft)	✓	✓		
International Scan Summary Report on Pedestrian/Bicycle Safety and Mobility	✓			
City of Portland B2 Power	✓			✓
City of Portland Bicycle Boulevards 2009	✓			✓



Technical Memorandum #1 – Review of Policies, Plans, Rules, and Regulations

Importance of Land Use and Transportation Integration

- › The Ashland community vision
- › Effective multi-modal transportation systems
- › Travel demand and behavior changes
- › Increasing role for public transit

Technical Memorandum #1 – Review of Policies, Plans, Rules, and Regulations

City of Ashland

Comprehensive Transportation Planning

- *Cornerstone policy of modal equity*
- *Transportation planning integral to community planning*
- *Three prong approach — transit, parking and bicycles and pedestrians*

Pedestrian and Bicycle Environment

Walking and biking a viable travel choices

- *Community character is multimodal*
- *Pedestrian-oriented development and traditional neighborhoods*



Technical Memorandum #1 – Review of Policies, Plans, Rules, and Regulations

City of Ashland

Public Transit

- *Desire for enhanced and viable transit service*
- *Transit access*
- *Transit-supportive development*

Parking Management

- *Problem statements about parking*
- *Impacts of congestion and parking on character*
- *Changes in a travel behavior meet both challenges*



Technical Memorandum #1 – Review of Policies, Plans, Rules, and Regulations

City of Ashland

Street Design

- *Street types and design standards*
- *Principles for planning and design*
- *Recognition of streets as public spaces*

Importance of Land Use

- *Integration of land use and transportation planning*
- *Mixed use and traditional neighborhood development*
- *Transit-supportive development*



Technical Memorandum #1 – Review of Policies, Plans, Rules, and Regulations

State

Overarching policies and a regulatory context

- *Coordination and cooperation*
- *Balanced transportation systems*
- *Safe and efficient*
- *State highways as community streets in Ashland*

Technical Memorandum #1 – Review of Policies, Plans, Rules, and Regulations

Regional

Coordinated studies, project planning, project implementation and transit service

- *Travel demand and multimodal options*
- *Long-range transit planning and service upgrades*
- *RTP and TIP project implementation*
- *Complementary TSP goals and objectives*



Technical Memorandum #1 – Review of Policies, Plans, Rules, and Regulations

Jackson County

Comprehensive Plan and Transportation System Plan (TSP)

- *Complementary Comp Plan goals and policies for Ashland*
- *TSP Livability Goal*
- *TSP Modal Components Goal*
- *TSP Integration Goal*

Technical Memorandum #1 – Review of Policies, Plans, Rules, and Regulations

Summary

Preliminary conclusions about the applicable baseline for an integrated land use and transportation plan

- *Viable multimodal options (e.g. modal equity)*
- *Reduce auto travel and manage parking*
- *Safe routes to schools, shopping, work and home*
- *Environmental responsibility*



Technical Memorandum #1 – Review of Policies, Plans, Rules, and Regulations

Summary

Understanding Ashland's plan, policy and community vision context for transportation.

- *Ashland Comprehensive Plan*
- *Ashland Land Use Code*
- *Ashland in Action 2000 and Downtown Plan – Phase II*
- *A Handbook for Planning and Designing Streets*
- *SOU Master Plan Update, Railroad Property Master Plan and Croman Mill Site Redevelopment Plan*



Technical Memorandum #1 – Review of Policies, Plans, Rules, and Regulations

Summary

Needs and opportunities for regional and county coordination

- *Long-range transit planning for routes and service*
- *Transit-supportive land use*
- *Regional Transportation Plan*
- *Transportation Improvement Program*



Technical Memorandum #1 – Review of Policies, Plans, Rules, and Regulations

Summary

Opportunities for state highways as community streets

- *Highway functions and community streets functions*
- *Special Transportation Areas (STA)*

Other References

- *Guidance for multimodal facilities*

Technical Memorandum #1 – Review of Policies, Plans, Rules, and Regulations

» Discussion

- *Your initial thoughts, input, comments, questions regarding Draft Technical Memorandum #1...*

» Additional PC/TC comments to respective Chair by Friday

- *TC copy Jim Olson due to Eric's schedule*



Technical Memorandum #2: Goals, Objectives and Evaluation Criteria



KITTELSON & ASSOCIATES, INC.
TRANSPORTATION ENGINEERING/PLANNING



CITY OF
ASHLAND

Technical Memorandum #2 – Draft Goals, Objectives, and Evaluation Criteria

- › TSP update goals and objectives build on the goals and objectives in previously adopted documents including the Comprehensive Plan
- › Draft goals for current update (page 2):
 - 1) *Create a “green” template for other communities in the state and nation to follow.*
 - 2) *Make safety a priority for all modes of travel.*
 - 3) *Maintain small-town character, support economic prosperity and accommodate future growth.*
 - 4) *Create system-wide balance for serving and facilitating pedestrian, bicycle, rail, air, transit and vehicular traffic in terms of mobility and access within and through the City of Ashland.*



Technical Memorandum #2 – Draft Goals, Objectives, and Evaluation Criteria

› Overview of objectives

- *Objectives for Goal #1 - Creating a Green Template focused on...(page 3)*
 - Expanding infrastructure to support non-auto travel
 - Integrating land-uses to facilitate non-auto travel
 - Updating street design standards to include “green streets” or “green street” features
 - Developing new policies to encourage non-auto travel



Technical Memorandum #2 – Draft Goals, Objectives, and Evaluation Criteria

› Overview of objectives

- *Objectives for Goal #2 - Make Safety a Priority focused on....(page 4)*
 - Coordinating with Safe Routes to School plans
 - Developing/Updating Access Management Plans
 - Incorporating new Highway Safety Manual analysis and processes into City processes
 - Reducing fatal and serious injury crashes



Technical Memorandum #2 – Draft Goals, Objectives, and Evaluation Criteria

› Overview of objectives

- *Objectives for Goal #3 - Small Town Character and Economic Prosperity focused on....(page 5)*
 - Integrating land use and transportation plans
 - Considering modal equity in land use and transportation plans
 - Identifying opportunities to facilitate sustainable growth within the UGB
 - Identifying adjustments to land use codes and regulations to support non-auto travel and economic prosperity



Technical Memorandum #2 – Draft Goals, Objectives, and Evaluation Criteria

› Overview of objectives

- *Objectives for Goal #4 - System-wide, Multimodal Balance in terms of Mobility and Access focused on....(page 5-6)*
 - Identifying ways to improve street connectivity
 - Developing alternative mobility standards to support non-auto travel
 - Recommending innovative ways to efficiently manage, operate, and fund the transportation system



Technical Memorandum #2 – Draft Goals, Objectives, and Evaluation Criteria

› Overview of Evaluation Process

- *Evaluate alternatives based on criteria specific to each goal and corresponding set of objectives (pages 6-9)*
- *Rating method:*
 - Most Desirable (+2) – Addresses criterion, makes substantial improvements in the criteria
 - Moderately Desirable (+1) – Partially addresses criterion, makes some improvements in the criteria
 - No Effect (0) – Criterion does not apply or concept has no influence on the criteria
 - Least Desirable (-1) – Does not support the intent of and/or negatively impacts the criteria



Technical Memorandum #2 – Draft Goals, Objectives, and Evaluation Criteria

» Discussion

- *Your initial thoughts, input, comments, questions regarding Draft Technical Memorandum #2...*

- » Additional PC/TC comments to respective Chair by Friday
 - *TC copy Jim Olson due to Eric's schedule*



Key Near Term Dates and Work Items

- › October 4 – City Council Meeting Briefing
- › October 26 – TAC Meeting #2, Joint PC/TC Meeting #2
 - *Discussing Existing Transportation Inventory and Conditions, Briefing on Pedestrian Node Concept Plans*
- › October 27 – Public Workshop #1
 - *Pending discussions on Pedestrian Node Concept Plan Schedule*
- › December 8 – Public Workshop #2
 - *Pending discussions on Pedestrian Node Concept Plan Schedule*